

---

---

# 2016 ANNUAL REPORT



## THOMAS COUNTY HISTORICAL SOCIETY

### MISSION STATEMENT

Adopted September 27, 2016

"Ensuring that the appreciation of our unique history remains an intrinsic and unbroken thread connecting the past and future through settings that advance our story."

---

## THANK YOU ANN HARRISON FOR 23 YEARS OF DEDICATED SERVICE



In February of 2016 Ann Harrison retired as the Executive Director of the Historical Society after 23 years of unparalleled service. Ann started at the Museum in February of 1993 and spend her years here bringing the Museum up to a professional level to be proud of. She instituted substantial improvements to the physical make-up of the Museum property including the addition of Davis Wing (completed in 1991) and the purchase and installation of the Metcalfe Courthouse in 2004. Ann also spearheaded multiple capital campaigns that continue to support the Museum today. The Board and staff nominated Ann for a Lifetime Achievement Award from the Georgia Association of Museums & Galleries and she will be presented with that honor at the annual conference in January.

## WELCOME, ANNE MCCUDDEN

The Thomas County Historical Society and Museum of History welcomed our new Executive Director, Anne McCudden in February 2016. Anne graduated from Loyola University, Chicago in 1992 with a B.A. in History. In 2002 she received her M.A. in Anthropology from Florida Atlantic University in archaeology. Anne has worked in a variety of positions within the Museum field over the last twenty years. She was the Director at the Seminole Tribe of Florida's Ah-Tah-Thi-Ki Museum, the Women's History Park in Miami, and the Children's Museum in Boca Raton before moving to Thomasville. She has been a member of the following boards: Florida Association of Museums, American Association for State and Local History, and The Association of Tribal Archives, Libraries, and Museums. Anne has been an American Alliance of Museums accreditation peer reviewer since 2010 and an IMLS and State of Florida grant panelist since 2012.



---

## 1916 AMERICAN LEFRANCE FIRE TRUCK DEPARTING FOR "FACE LIFT"

The Thomasville Fire Department purchased a brand new American LaFrance Type-12 Fire Engine in 1916. It was the second motorized fire engine purchased by the Fire Department, and the first new one. The fire engine remained in active service until 1955, having undergone several upgrades through the years. In 1964 Bill Flowers purchased the fire truck for the Chamber of Commerce. It remained on exhibit there until 1972, when it was donated to the Society.

The restoration of this collection piece was always a dream of our former board member, Russ Jinright. When Russ passed away earlier this year, his family was kind enough to ask for donations to help fund the restoration needed to get the truck



looking brand new and ready for a stroll through town. We were fortunate to receive donations equaling more than \$20,200 from many loyal and dedicated museum supporters in Russ' honor and we plan on transporting the truck to "Hemee Heads" in Nashville, GA in January 2017. We will keep everyone posted as the work progresses.

---

---

# PRESERVE & MAINTAIN



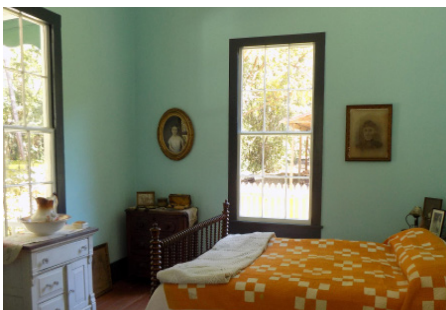
As many of you are aware, the Museum campus has grown and expanded over the last 50+ years. Buildings have been added and moved and the landscaping has been revitalized. The most recent addition of property was .83 acres purchased in 2011. With this additional land, we will be able to expand the boundaries of summer camp and other programs, and provide some often needed parking space for our larger events. The property was cleared of all major vegetation in the summer of 2016 and is now accessible to the staff. We plan on making some additional improvements to the basic landscaping to make this land available for everyday use. In September, eleven interpretive signs were added to the backyard detailing the history of each structure and how it came to be a part of the Society's property. The signs feature interior and exterior images and have allowed for the addition of a self-guided tour option.



## LAPHAM-PATTERSON HOUSE

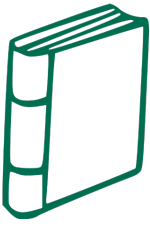
The Society continues to operate the State owned Lapham-Patterson House with a generous donation from the Williams Family Foundation. Though still only open on Friday and Saturday, we built new programming into the Lapham-Patterson's schedule this year. We held a "Make History" event in February, a Victorian summer camp in June, a three-day Halloween event *Tales from the Lapham-Patterson House*, and a holiday reading with storyteller, Sandra Kelley. Attendance and admission revenues increased in 2016 and we hope to expand upon that growth in 2017. The House continues to be an iconic symbol for the City of Thomasville and it has become clear to us that the house holds a special place in the hearts of Thomasvill-ians as well as visitors from across the region who seek it out for its one-of-a-kind architectural features, we hope that will continue for years to come.

## JOYNER HOUSE RESTORATION COMPLETED



Beginning in the summer of 2016, we were able to start work on some much needed restoration work to the 1877 Joyner House located at the corner of Jerger and Crawford Streets. The funds needed for this work were generously donated by the W.H. Flowers Jr. Foundation, Inc. The work included re-plastering and painting the living room and painting the exterior of the house. The work was done in a historically accurate manner so as to keep the physical integrity of the house intact. The plaster was applied directly to the wood lathe and the paint colors were chosen by sanding down existing wood to identify the original color scheme. The work was completed in early October and we welcome visitors to come take a look at the "new" face of the Joyner House.

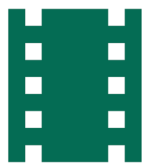
# COLLECT



The collections of the Thomas County Historical Society expanded by thirty donations in 2016. The size of each donation ranged from several single-object donations, to a few that included hundreds of photographs and documents. Among the more significant additions to our collection include more than **35** yearbooks from CENTRAL/THOMAS COUNTY CENTRAL HIGH SCHOOL, **15** yearbooks from THOMASVILLE HIGH SCHOOL, **150+** pictures documenting the construction of the path around CHEROKEE LAKE, and a collection of photographs of THOMASVILLE in 1906.

## DIGITIZATION

The rate of digitization of the collections of the Historical Society accelerated in 2016. The addition of a wide-bed scanner, new computer, and document feeder scanner in the curatorial office has more than doubled the capacity to digitize, which allows us to share our images and provide researchers with the materials they need at an even greater rate.



**22,000**  
scanned negatives

- 800+ A.W. Moller Collection negatives
- 1,000 Hansell Watt Collection negatives
- 18,000 Ed Kelly Collection negatives
- Nearly the entire VHS tape collection was digitized in 2016!



**110,000**

Digital Images In All Collections

## RESEARCH



**160** Researchers  
**600** Questions

The two most common research queries this year were property histories and genealogies. There were **97** direct sales, which include image requests, scanned documents, research-by-proxy, and copies, totaling more than **\$1,000** in sales. In addition to the direct sales, there were several in-kind research trades which totaled thousands of dollars in free advertising.

## EXHIBITS

In 2016 we expanded and improved our exhibits in the gallery hall and Resort Room. We added significantly larger images, shortened text with larger fonts, and a cleaner design to engage Museum visitors. The orientation room upgraded was with a streaming device from a DVD player, allowing a variety of videos to be shown.



# SHARE

EDUCATION

This year we added a few new twists to the perennial favorite history camps. Now known as Camp Dawson, our five-day camp remained rooted in the same activities and themes that have inspired and engaged Thomas County campers for nearly 20 years, just with a little added museum mischief and adventure. We also expanded our focus at Camp LPH. Over three days, campers dug deeper into the house, its history, and its families.



750+ students & teachers on field trips

395+ Outreach via classroom primary source workshops



5,350+

Visitors & Interactions

4,800+

Visitors from near & far

550+

Direct local outreach

45 STATES



FROM &

9 COUNTRIES



AUDIENCE

Online sharing continues to expand as our Facebook, Twitter, and Instagram pages grow in overall numbers of users, as well as a rate of interaction with our pages rivaling those of much larger Museums.

Active Daily Presence On These Platforms:



YouTube

> 6,500 = 55%

Followers

growth over 2015 total followers



15,000+

User Reach (per week)

# GROW

MEMBERSHIPS

We have altered the renewal schedule for annual memberships. In the past, all annual memberships expired on December 31st. Now, members who join or renew will have a membership expiration date one year from the date in which payment was received. This allows for a more flexible renewal schedule and guarantees that all members receive a full year of benefits. Renewal appeals will be mailed at the beginning of each month.

Current memberships total **330+**

PLEASE JOIN US IN THANKING OUR GENEROUS SUPPORTERS:

## GRANTORS

- THE ELISHA BOLTON FOUNDATION
- CHEROKEE FOUNDATION
- JASPER & MARTHALENE DAVIS FOUNDATION
- WILLIAM H. FLOWERS, JR. FOUNDATION
- INGALLS FOUNDATION
- MACINTYRE FUND
- EMILY & BILL SEARCY TRUST
- THE LEWIS HALL & MILDRED SASSER SINGLETARY FOUNDATION
- WILLIAMS FAMILY FOUNDATION OF GEORGIA
- MARGUERITE NEEL WILLIAMS FUND OF THE WILLIAMS FAMILY FOUNDATION OF GEORGIA
- THOMASVILLE ANTIQUES SHOW FOUNDATION
- THE SCOTT FAMILY FUND

## MAJOR DONORS & GRAND BENEFACTOR MEMBERS

- |                              |                                |
|------------------------------|--------------------------------|
| ARCHBOLD MEDICAL CENTER      | MRS. DIANE WILLIAMS            |
| COMMERCIAL BANK              | PARKER                         |
| FLOWERS FOODS                | MR. & MRS. B. SCOTT            |
| ORCHARD POND GREENWAY        | RICH                           |
| THOMASVILLE NATIONAL BANK    | MR. & MRS. RANDY RHEA          |
| MR. & MRS. JOE BEVERLY       | ELVA RUBIO & SCOTT             |
| MR. & MRS. KEN BEVERLY       | TIMCOE                         |
| MR. & MRS. THOMAS BLACK      | MRS. FRANK E. WILLIAMS         |
| GEORGE E. CROUCH FOUNDATION  | MR. & MRS. C. MARTIN WOOD, III |
| DR. & MRS. DOUGLAS MCPHERSON | MR. & MRS. JOHN WOOD           |
| THE ORR FAMILY               | ARLEN & DORIS YOKEY            |
|                              | CHARITABLE FOUNDATION          |